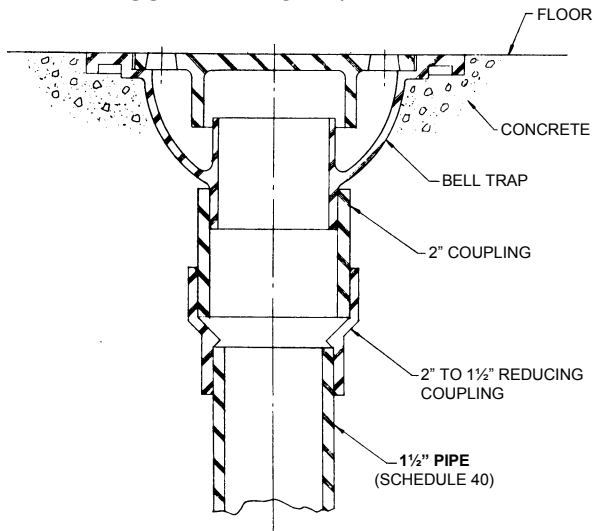


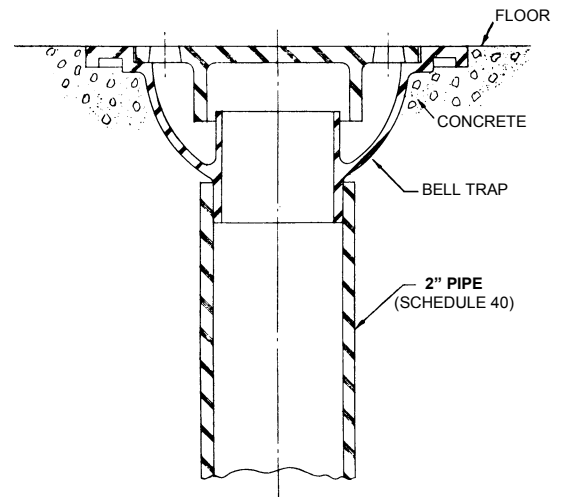
INSTALLATION OF WILTSE BELL TRAPS

When these bell traps are used in concrete floor it is not mandatory that the trap fit tightly with Schedule 40 pipe. However, these diagrams show how the traps are used when a snug fit is required.

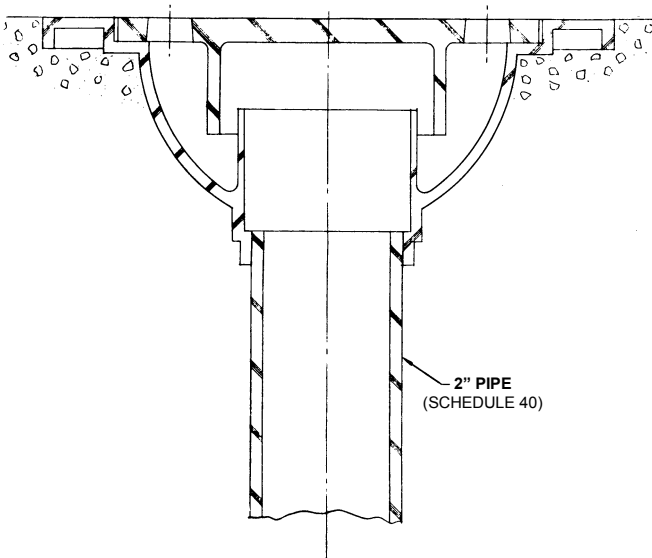
**6" x 6" BELL TRAP
ASSEMBLY FOR 1½" PIPE**



**6" x 6" BELL TRAP
ASSEMBLY FOR 2" PIPE**



**9" x 9" BELL TRAP
ASSEMBLY FOR 2" PIPE**



**9" x 9" BELL TRAP
ASSEMBLY FOR 3" PIPE**

