

# MK-SDG-7

## PARTS LIST

Part# 166859



Revision 300	04.2021
Manual Part# 168146	

**Caution:** Read all safety and operating instructions before using this equipment. This manual **MUST** accompany the equipment at all times.

FIGURE 2 SDG-7 PART # 166859

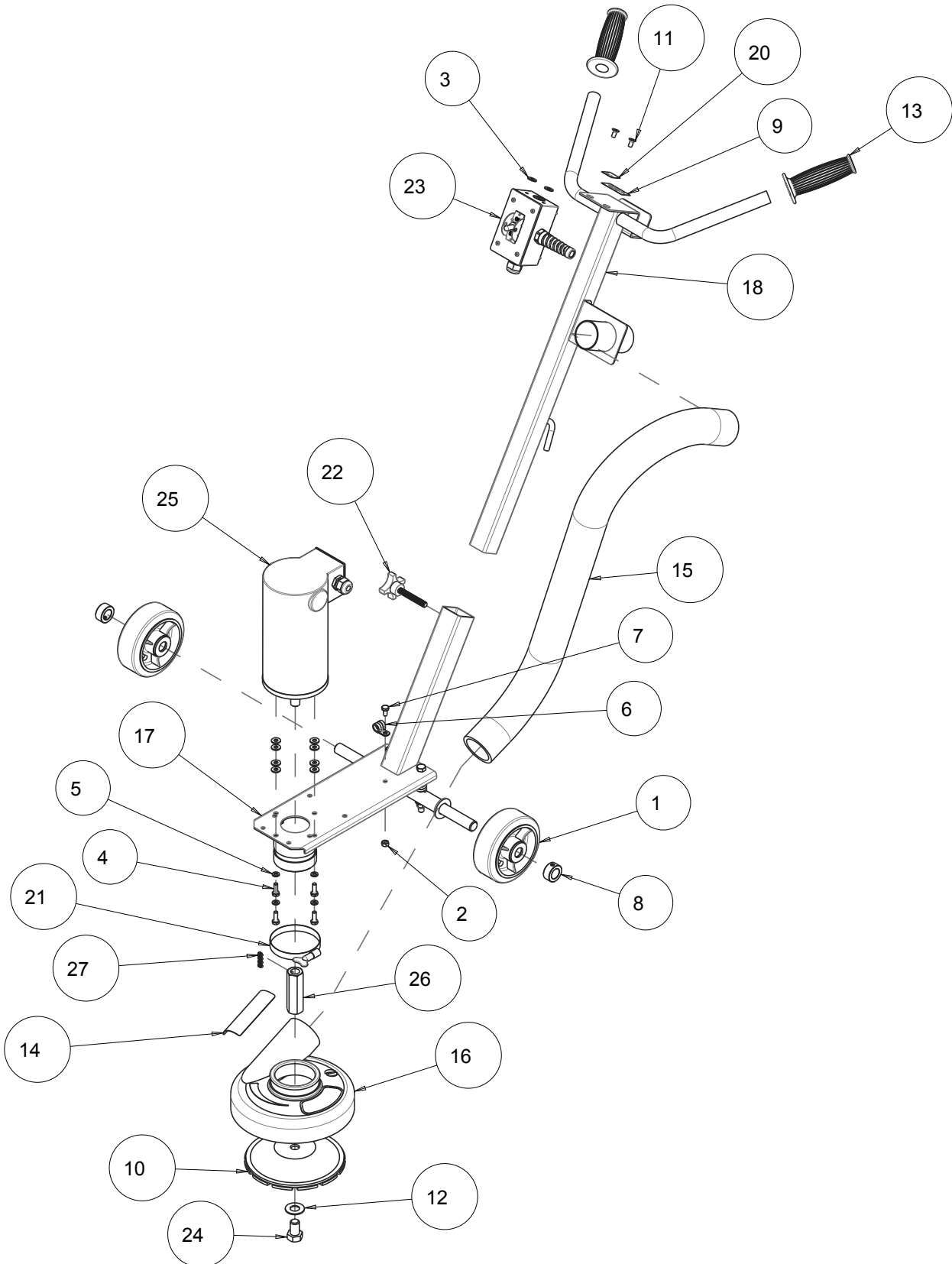
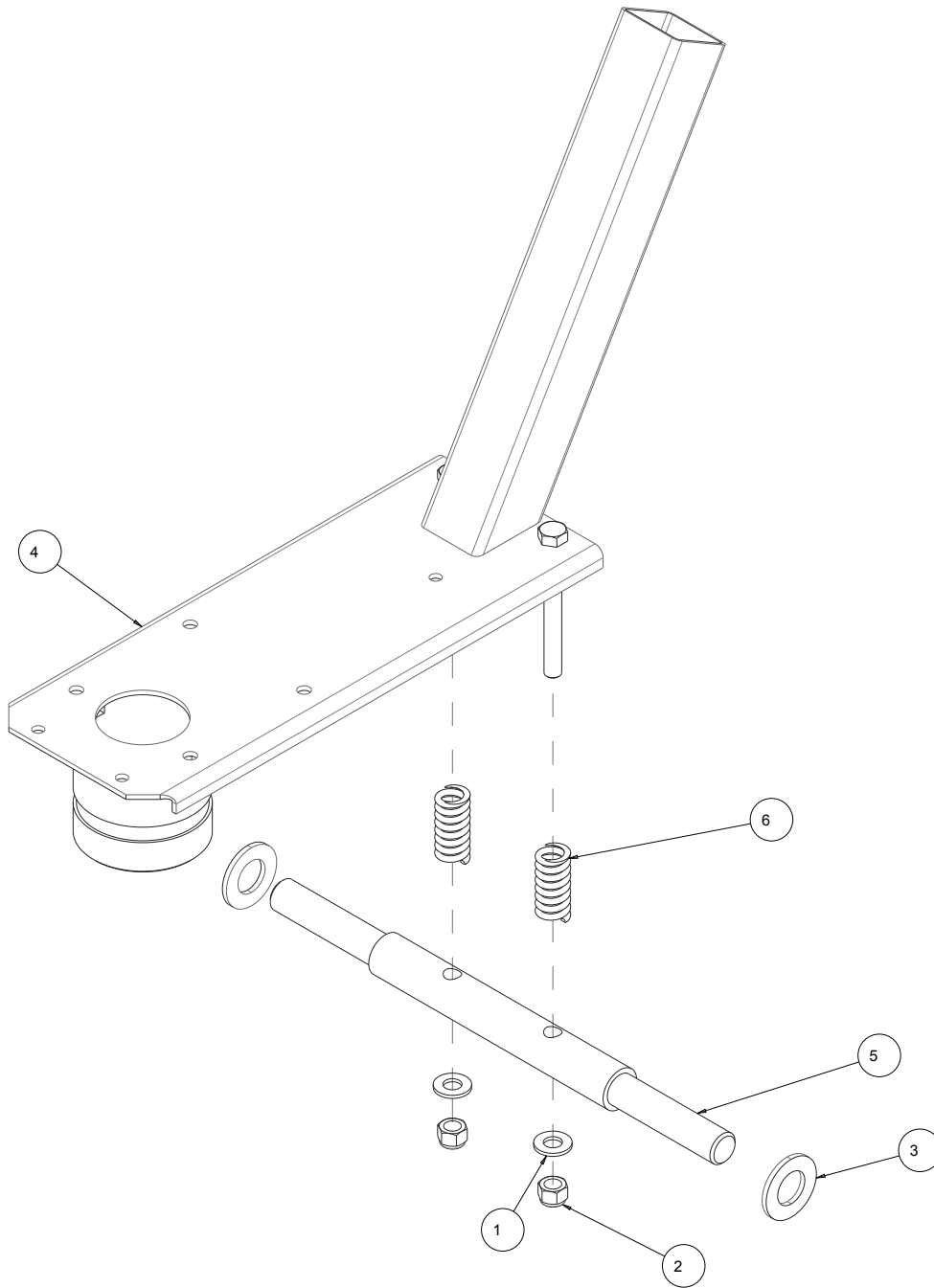


FIGURE 2 SDG-7 PART # 166859

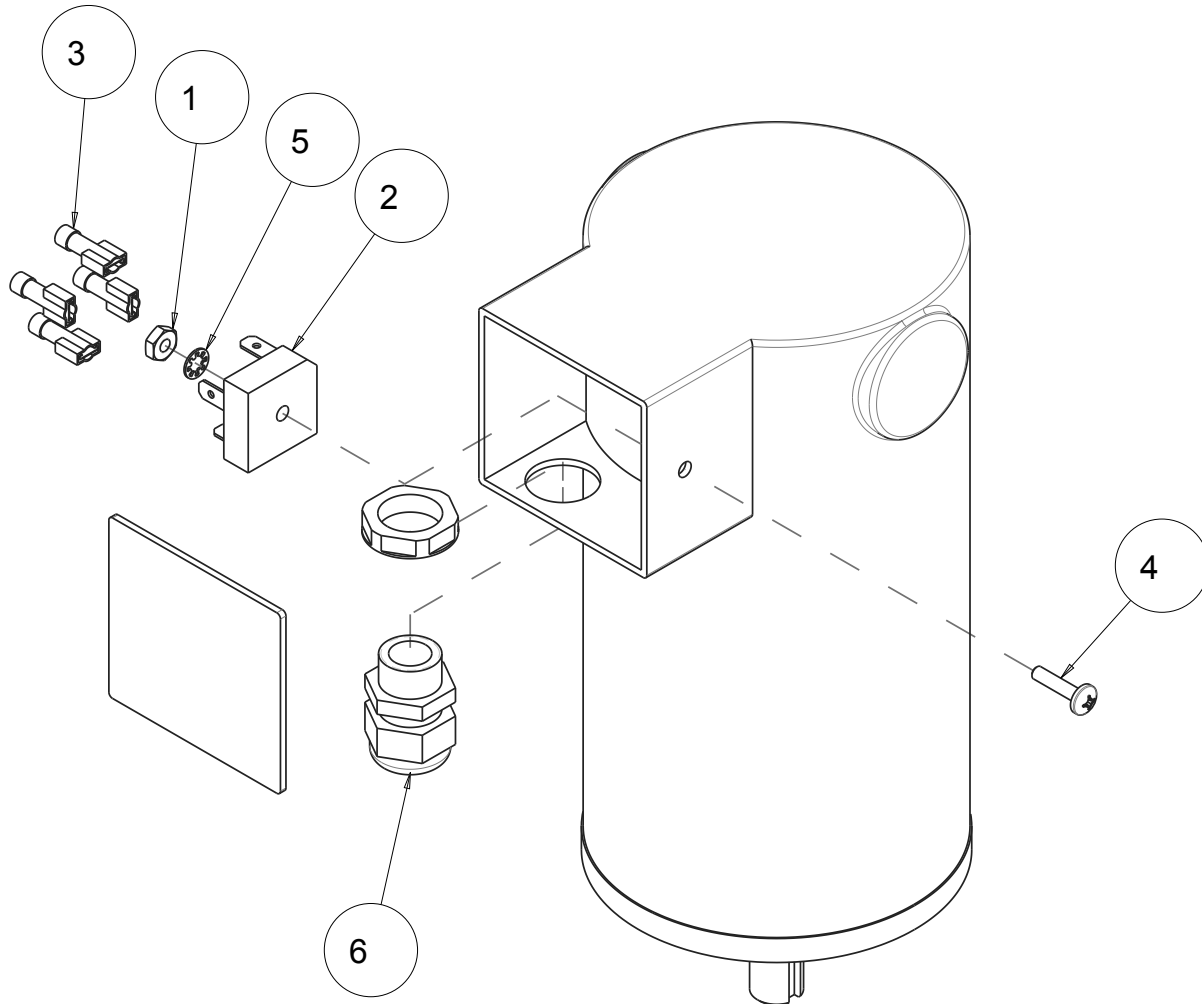
ITEM	DESCRIPTION	PART #	QTY
1	WHEEL, FRONT 5"X2"W	138537	2
2	NUT,HEX,1/4-20	151893	1
3	WASHER,FLAT,SAE,1/4	151915	10
4	SCREW,HEX HD,1/4-20X3/4	152370	4
5	WASHER,LOCK,SPLIT,1/4	152591	4
6	CLAMP,CUSHION LOOP 3/8	152592	1
7	SCREW, 1/4-20 X 1/2 HEX HEAD	152608	1
8	COLLAR, SET, 3/4"	153814	2
9	LABEL,WARNING,READ MANUAL	154398	1
10	MK-304CG1 7X7/8-5/8	155446	1
11	SCREW, FLAT HEAD, 1/4-20x1/2 PHIL	155812	2
12	WASHER, FLAT, 5/8 SAE	158350	1
13	GRIP, HANDLE 7/8 ID	158608	2
14	LABEL,WARNING,SILICA, PROP 65	164202_01	1
15	HOSE, VACUUM, 2"ID (36"L)	166536_1	1
16	ASSY, DUST SHROUD, FULL	166649	1
17	ASSY, BASE	166860	1
18	HANDLEBAR, SDG-7	166861	1
19	OWNERS MANUAL SDG-7	168146	1
20	LABEL, QR CODE	170480	1
21	CLAMP,DUST SHROUD,BLACK	170535	1
22	KNOB, FOUR ARM, 3/8-16 X 2-1/2	172214	1
23	ASSY, SWITCH BOX, SDG-7	172836-5AMT	1
24	SCREW, HEX HD, GRADE 8, 5/8-11X1	172998	1
25	MTR, 1/2HP 120VDC, HHP48-5-90-25NV	173045	1
26	ADAPTER, SHAFT, AMATEK MTR	173059	1
27	SCREW, SET, DOG PT, 1/4-20 X 5/16	173075	4

FIGURE 3 FLOOR GRINDER, BASE PART # 166860



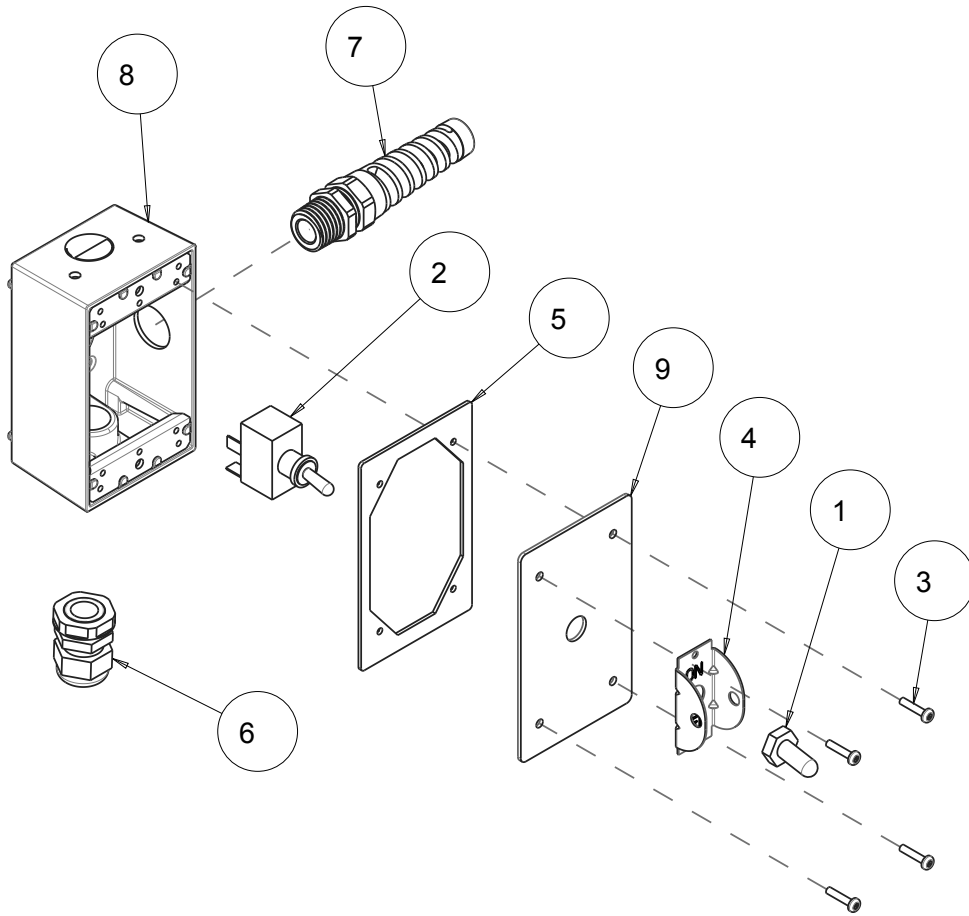
ITEM	DESCRIPTION	PART #	QTY
1	WASHER, FLAT, SAE, 3/8	150923	2
2	NUT, HEX, NYLK, 3/8-16	152505	2
3	WASHER, FLAT, SAE, 3/4	153523	2
4	BASE WELDMENT	166860-R	1
5	AXLE	172907	1
6	SPRING	172908	2

FIGURE 4 FLOOR GRINDER, BASE PART # 173045



ITEM	DESCRIPTION	PART #	QTY
1	NUT, HEX, 10-24	151749	1
2	RECTIFIER, 40 AMP	153677	1
3	TERMINAL, 16-14 X .25 QD F FI	154539	4
4	SCREW,PAN HD PHIL MS 10-24X3/4	156641	1
5	WASHER,LOCK,IT,#10	158336	1
6	CONNECTOR, CORD, LTF1/2	161504	1

FIGURE 5 SWITCH BOX PART # 172836-5AMT



ITEM	DESCRIPTION	PART #	QTY
1	COVER, SWITCH	154301	1
2	SWITCH, TOGGLE 125V 20A	154310	1
3	SCREW, PAN HD, PHIL 6-32 X 5/8	157393	4
4	PLATE, TOGGLE SWITCH LOCKOUT	158211	1
5	GASKET, COVER, 30 AMP SWITCH	159491	1
6	CORDSET, MOTOR, SGD-7	167176-AMT	1
7	CORD, POWER, 14/3 115V	167180	1
8	BOX, SWITCH, COMP SDG-7	172835-3	1
9	COVER, SWITCH	172838	1

**MK-SDG-7**  
OWNERS MANUAL, PARTS LIST, EXPLODED  
& OPERATING INSTRUCTIONS



**MK Diamond Products, Inc.**

MK Diamond Products, Inc.  
1315 Storm Parkway  
Torrance, CA 90501

Toll-Free: (800) 845-3729  
Phone: (310) 539-2221  
Fax: (310) 539-5158  
[www.mkdiamond.com](http://www.mkdiamond.com)